

HMI

Operating & Monitoring





Starting with the small smartPanels up to the large, high-performance Panel PC, we offer you the complete HMI product range.

Often the interaction between humans and machines is carried out via operating devices which are connected with the heart of the installations. Right here the operating devices are deployed. Whether from the smallest installation up to large,

multiple networked machines that are deployed worldwide. Regardless of which system you choose they are all founded on the same basis and so they can be used for all project engineering and programming, starting from the smallest up to the largest one.

Our Touch Panels have proven themselves in many applications in all industries for years. The range of the systems deployed is as wide as the applications and technologies in the respective installation.



visualization with
HMI Designer

smartPanel



smartPanels – The smartest choice for high usability, performance and connectivity in one single panel.

The smartPanels are optimally designed for entry-level and medium-sized applications. They stand for high user-friendliness and connectivity. Equipped with a 1 GHz ARM Cortex-A8 processor and HMI Designer or Movicon 11 standard, the user is unlimited in terms of tags, screens, recipes, alarms, etc.

Functionality

- The smartPanels are supplied with Linux system environment ready for HMI Designer or Windows Embedded Compact 7 with Movicon 11.

Quality

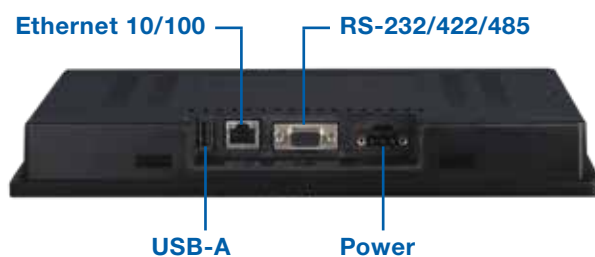
- Robust and durable – IP66 protection rating (front)

Open for teleservice

- By means of the VNC-Client software you can also have access to your smartPanel via teleservice

smartPanels in detail

- Slim Profile
- Robust housing suitable for industrial use
- ARM Cortex Processor
- Powerful scripting functions
- OPC UA and almost 200 integrated communication protocols
- For powerful and cost-effective HMI applications



Models and specifications

Model Number	H41-71A41-0	H41-A1A41-0	H71-71A41-0	H71-A1A41-0	HA1-71A41-0	HA1-A1A41-0
Display Size [In]	4.3		7		10.1	
Resolution [Pixel]	480 x 272		800 x 480		1024 x 600	
Touch Screen	Resistive					
Processor	ARM Cortex-A8 1GHz					
Interfaces	1x RS232/422/485;		1x USB-A;	1x Ethernet		
Work Memory [MB]	512					
Load Memory [GB]	4					
Card Slot	-					
Housing	Plastic					
Protection	Front: IP66 / Rear: IP20					
Operating System	WEC7	Linux	WEC7	Linux	WEC7	Linux
Runtime	Movicon 11	HMI Runtime	Movicon 11	HMI Runtime	Movicon 11	HMI Runtime
Tags	4096 I/O Bytes	10,000 Tags	4096 I/O Bytes	10,000 Tags	4096 I/O Bytes	10,000 Tags

Panel PC



visualization with
HMI Designer

Panel PCs - intelligent operating and monitoring with PC performance for high end visualization.

With the Panel PC series you are best equipped for all monitoring and visualization tasks. Combining the most modern performance features and the highly accurate and responsive projected capacitive touch-screen, our Panel PC series concentrates the

highest usability in the smallest space. The Intel Celeron processor technology, large integrated work memory and display resolutions up to Full-HD in the 21.5" Panel PC leaves nothing to be desired. The Windows system environment which most users are familiar

with, means there is no wasting time learning how the system works. The Panel PCs also have many useful interfaces. The visual impression of your control cabinet is enhanced considerably by the high-quality materials of the Panel PCs.

Models and specifications with HMI Designer

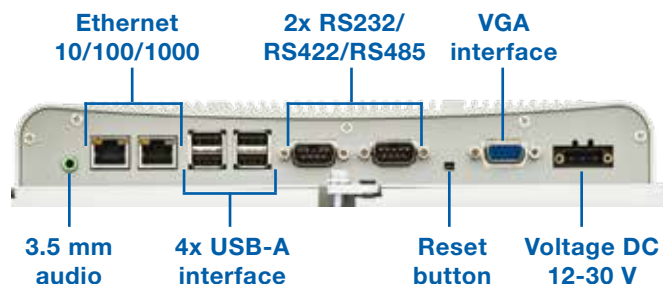
Model Number	67K-RTP0-KJ	67P-RTP0-KJ	67S-RTP0-KJ
Display Size [in]	10.1	15.6	21.5
Resolution [Pixel]	1280 x 800	1366 x 768 (HD)	1920 x 1080 (Full HD)
Touch Screen	Capacitive		
Processor	Intel Celeron J1900 4 x 2.0 GHz		
Interfaces	2x Ethernet; 2x RS232/422/485 (SUB-D), 2x USB 2.0; 1x USB 3.0, 1x VGA, 1x Audio out		
Work Memory [MB]	8 GB		
User Memory [MB]	64 GB		
Card Slot	CFast		
Casing	Aluminium		
Protection	Front: IP65 / Rear: IP20		
Operating System	Windows 10 IoT Enterprise		
Runtime	Designer PC Runtime		
Tags	10,000 Tags		



Movicon

Further features

- Intel Celeron J1900 4 x 2.0 GHz
- High display resolution up to Full-HD at the 21.5" Panel
- Numerous interfaces for every application need
- Fanless construction
- High-quality metal housing
- Full brilliant glass front



Models and specifications with Movicon

Model Number	67K-RTP0-KB	67P-RTP0-KB	67S-RTP0-KB
Display Size [in]	10.1	15.6	21.5
Resolution [Pixel]	1280 x 800	1366 x 768 (HD)	1920 x 1080 (Full HD)
Touch Screen	Capacitive		
Processor	Intel Celeron J1900 4 x 2.0 GHz		
Interfaces	2x Ethernet; 2x RS232/422/485 (SUB-D), 2x USB 2.0; 1x USB 3.0, 1x VGA, 1x Audio out		
Work Memory [MB]	8 GB		
User Memory [MB]	64 GB		
Card Slot	CFast		
Casing	Aluminium		
Protection	Front: IP65 / Rear: IP20		
Operating System	Windows 10 IoT Enterprise		
Runtime	Movicon 11.6		
Tags	128 I/O Bytes		

HMI Designer

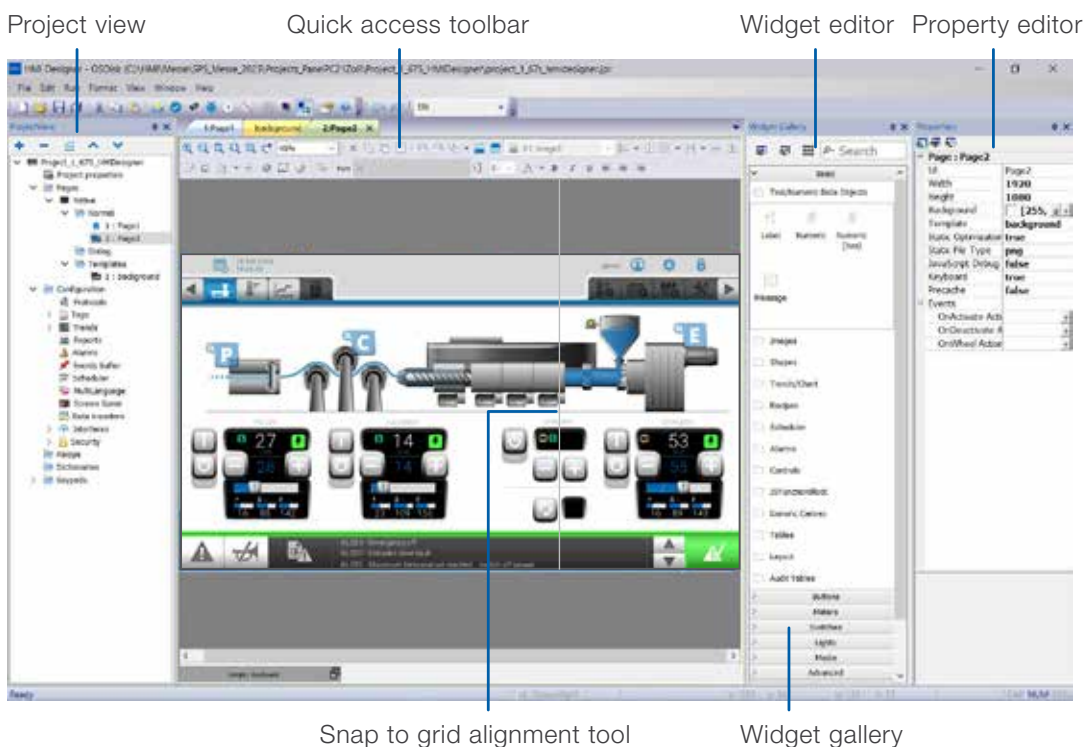
HMI Designer is an HMI development environment that is included with iCube Engineer at no additional cost.

It is available as a stand-alone version, which can also work easily with other third-party tools.

Projects can run on smartPanels, PanelPCs, iC9200, or HTML5 web devices and iCube Engineer OPC UA tags will automatically synchronize with the HMI project.

visualization with

HMI Designer

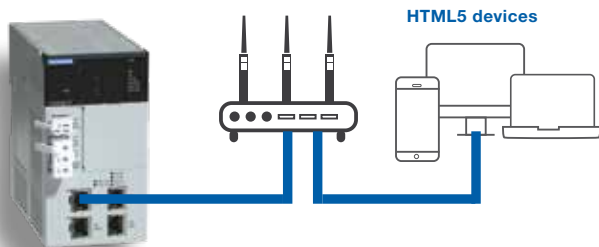


HMI project on iC9200

- iC9200 hosts the HMI project (WebVisu)
- Uses iCube resources (3-core processor, memory)
- Generic HTML5 device used for viewing
- iC9200 is selected as the target
- If “unified” project is selected (default), same project can be sent to controller, HMI panel or any device with HTML5 browser.

Features

- 200+ drivers
- Alarm handling
- JavaScript
- Datalogging
- Project simulation
- OPC UA online browsing
- OPC UA tags synchronize with iCube Engineer projects
- Project on iC9200
- All integrated communication protocols offer tag import



MOVICON

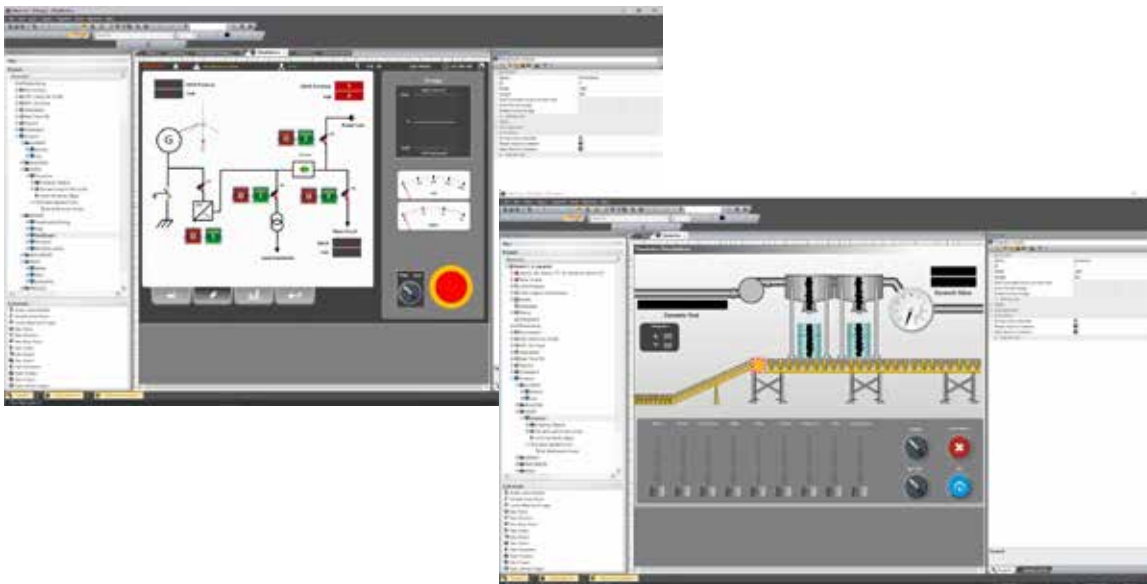
For many years Movicon has been one of the market leaders in the field of operating and monitoring.

Movicon offers easy, effective instruction functions and graphic animations. 16 animation features for objects, among them motion, transparency functions, colors, color fillings, text editing etc. with powerful design and layout functions in 32 levels. Process data storing in data loggers with object-based management. Au-

tomatic ODBC connection for archives in relational data bases. In-memory data base support for the alternative recording in encodable text and XML files.

All important drivers support the automatic tag import from the PLC program. Tag import from every system (e.g. MS Excel).

Movicon



Features

- Editable vector graphics
- Automatic recipe control
- Alarm handling
- Certificated OPC compatibility
- OPC UA, DA and XML DA Client
- Datalogging
- Text reports (CE Version)
- Embedded reports (Version 11 WIN)
- Trend reports
- VBA drivers interface
- I/O bytes: Up to 4096
- 2 Web clients (CE Version)

Line displays



„Even though line displays have become very rare in the market, we still have them in our programme. This is due to our sustainable product policy, but also because our customers still ask for line displays. And we listen to our customers.“



The text display TD 03

- Conceptualized for the deployment with our CPUs and Siemens CPUs
- Programmable with TD-Wizard



The operator panel OP 03

- For operating and monitoring small applications
- Programmable with OP-Manager or Siemens ProTool



Space-saving and robust

- Rugged zinc diecast box with degree of protection IP65 (front)
- Increase watertightness due to absence of slots for labeling strips

YASKAWA Europe GmbH

Drives Motion Controls
Hugo-Junkers-Str. 13
90411 Nuremberg
Germany

+49 6196 569-500
support@yaskawa.eu
www.yaskawa.eu.com

11/2024 | YEU_Controls_HMI_EN_V1